

Analysis of Combined Bills

Assumed monthly consumption 5,000 gallons

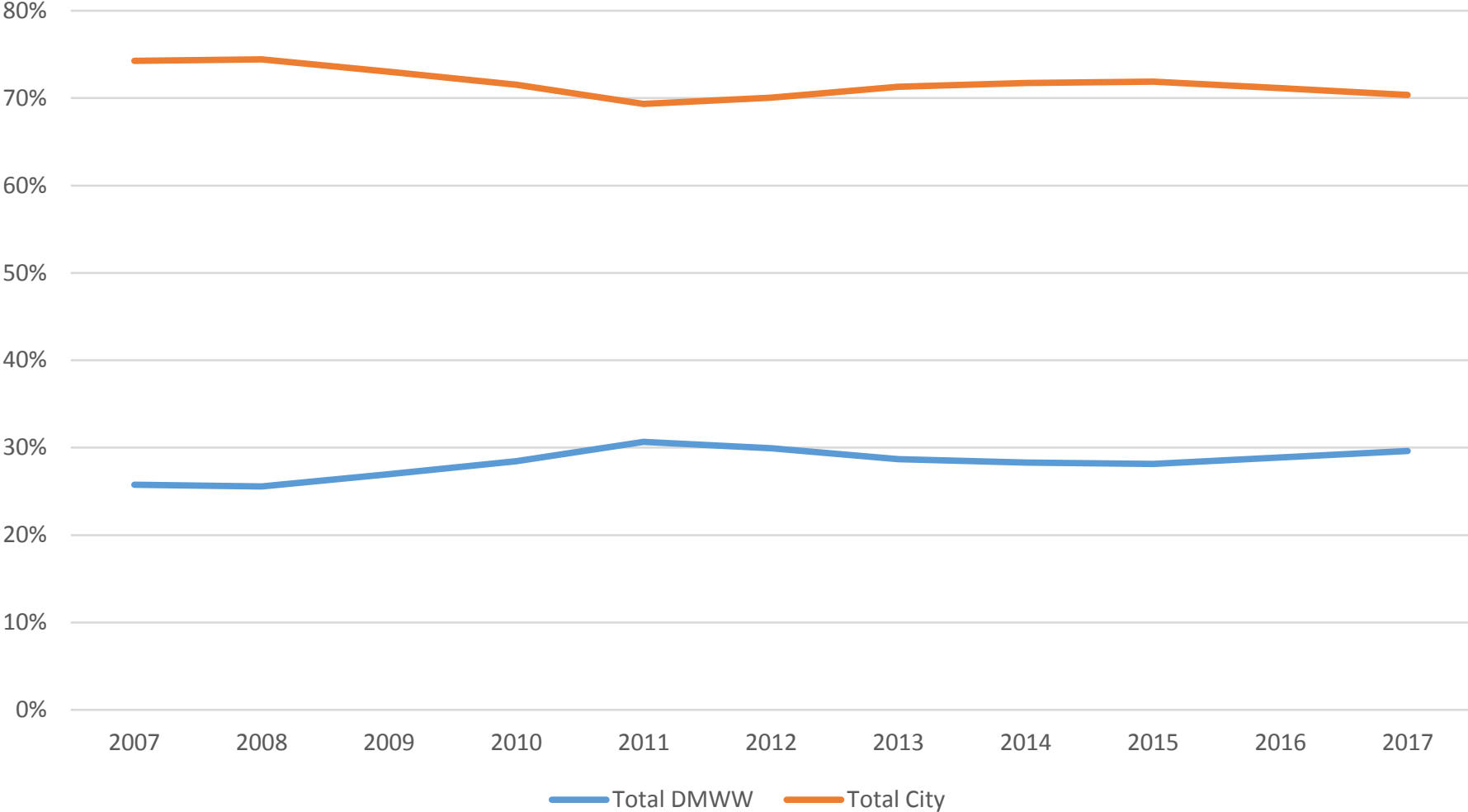
Year	Water				Sewer, Storm, Solid Waste, Total City						Total Avg Combined Bill
	Water	Water Avail	Total DMWW	% of Total Bill	Sewer	Sewer Avail	Storm	Solid Waste	Total City	% of Total Bill	
2007	11.40	3.00	\$ 14.40	26%	18.70	4.40	6.43	12.00	\$ 41.53	74%	\$ 55.93
2008	11.75	3.00	\$ 14.75	26%	19.80	4.40	6.75	12.00	\$ 42.95	74%	\$ 57.70
2009	13.50	3.00	\$ 16.50	27%	21.00	4.40	7.29	12.00	\$ 44.69	73%	\$ 61.19
2010	13.50	5.00	\$ 18.50	28%	22.25	4.40	7.87	12.00	\$ 46.52	72%	\$ 65.02
2011	14.85	6.00	\$ 20.85	31%	22.25	4.40	8.50	12.00	\$ 47.15	69%	\$ 68.00
2012	15.15	6.00	\$ 21.15	30%	24.25	4.40	8.84	12.00	\$ 49.49	70%	\$ 70.64
2013	15.15	6.00	\$ 21.15	29%	26.45	4.40	9.74	12.00	\$ 52.59	71%	\$ 73.74
2014	15.90	6.00	\$ 21.90	28%	28.79	4.40	10.33	12.00	\$ 55.52	72%	\$ 77.43
2015	17.00	6.00	\$ 23.00	28%	31.40	4.40	10.95	12.00	\$ 58.75	72%	\$ 81.75
2016	18.70	6.00	\$ 24.70	29%	32.95	4.40	11.50	12.00	\$ 60.85	71%	\$ 85.55
2017	20.55	6.00	\$ 26.55	30%	34.60	4.40	12.07	12.00	\$ 63.07	70%	\$ 89.62

Conclusions

Over the last 10 years:

- DMWW has increased average monthly water charges by \$12.15, and has increased as a percentage of the bill (from 26% to 30%).
- City of DM has increased average monthly service charges by \$21.54, but has decreased as a percentage of the bill (from 74% to 70%)
- DMWW has increased rates an average of 6% per year.
- City of DM has increased rates an average of 4% across all services of sewer, stormwater, and solid waste.
- City services of solid waste and sewer availability (totaling \$16.40 per month) have remained unchanged over this period.

% of Bill Attributed to DMWW vs. City of DM



Service Charges DMWW vs. City of DM

